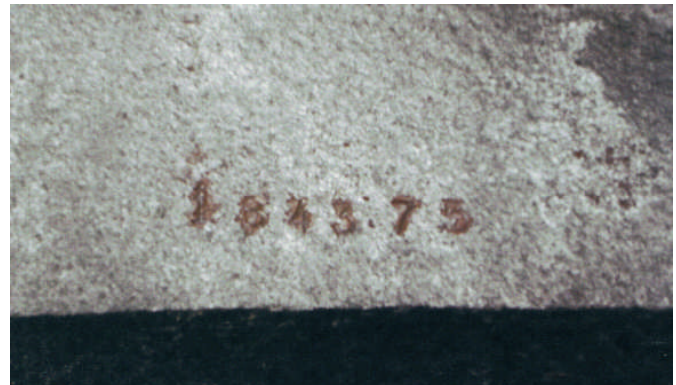


## Salvage Committee – Best Practices

The purpose of disposing of the old solid fuel burning appliances is to render them unusable and recyclable.

The purpose of this document is to help with suggestions and guidelines on how to go about disposing of these appliances.

1. Stamping the tops of the old appliances with the last six numbers, of the serial number that is on the new appliance rating label.
2. The retailer/coordinator will be responsible for physically taking the old appliance and rendering it non-useable by removing the doors, bludgeoning the flue collar, removing the firebrick from appliance and delivering the body to the designated public works yards and/or transfer station where it can be picked up by a recycler after signing off for the appliances. *The coordinator/recycler representative sign off on the tracking form.*



- a. This would be done using inexpensive number stamps and hammering the numbers onto the top of the appliance, in the vicinity of the front of the flue collar, after the flue collar was bludgeoned beyond any possibility for further connection/use.
- b. This would will also help in keeping track of the disposed of stoves and, in the event of theft of the appliances, the numbers stamped on top of the appliances could act as a deterrent to their possible sale and use. These numbers could be used in advertising, if someone sees numbers on the top of stoves, this means that the stoves have not been recycled and should be reported just like the Ministry of Environment "RAPP" program (Report All Poachers and Polluters)



- c. Various forms of heavy equipment can be used to crush the appliance, and left in a secure yard. If the crushing happens right away, then the flue collar and door hinges will not have to be bludgeoned by the Retailer/Coordinator but if the old appliance will be waiting until this happens, then the old appliance will still have to be stamped/punched with the last 6 digits of the serial number, of the new appliance, on top of the old appliance, near the front of the flue collar and it will have to be rendered non-usable by removing the doors, bludgeoning the door hinges and the flue collar of the appliance to disable flue connection and possible rehangng of doors. The Firebrick should be removed. *The coordinator/recycler representative sign off on the tracking form*
- d. Arrangements with Metal recyclers where the recyclers leave "bins" at the local retail locations. The Retailer must render the old appliance non-usable

by removing the doors, bludgeoning the door hinges and the flue collar of the appliance to disable the flue connection and possible rehang of doors, stamping the last 6 digits of the serial number, of the new appliance, on top of the old appliance, near the front of the flue collar, removing firebrick and keeping the old appliance there until a pickup is requested. *The retailer/coordinator/recycler representative sign off on the tracking form.*

3. **For areas without a coordinator** - The Retailer or Homeowner render the old appliance non-usable by removing the doors, bludgeoning the door hinges and the flue collar of the appliance to disable flue connection and possible rehang of doors, stamping the last 6 digits of the serial number, of the new appliance, on top of the old appliance, near the front of the flue collar, removing firebrick and delivering the appliance to a local recycler. Get a receipt from the recycler making sure the serial numbers that were stamped on top of the appliance are on the receipt and then forward a copy of the receipt to your distributor/manufacturer to process your retailers' discount. Destruction of appliance must be confirmed (by photograph showing identifying marks and/or showing how the unit was rendered inoperative. From the distributor/manufacturer, the forms must go to the HPBAC-western chapter office to be distributed as necessary. 1573 Charleton Court, Port Coquitlam, BC V3B 6M8. 604-941-4172 phone/fax, [zigi@shaw.ca](mailto:zigi@shaw.ca).
4. **For areas without a coordinator** - Cut the old appliance up into strips with a cutting torch. Destruction of appliance must be confirmed (by photograph showing identifying marks and/or showing how the unit was rendered inoperative. Forward a copy of the Photograph to the Dealer who in turn must submit it along with a copy of the tracking form to the distributor/manufacturer in order to process the retailers' discount. From there the forms must go to the HPBAC-western chapter office to be distributed as necessary. 1573 Charleton Court, Port Coquitlam, BC V3B 6M8. 604-941-4172 phone/fax, [zigi@shaw.ca](mailto:zigi@shaw.ca). 1573 Charleton Court, Port Coquitlam, BC V3B 6M8. 604-941-4172 phone/fax, [zigi@shaw.ca](mailto:zigi@shaw.ca)
5. **For areas without a coordinator** - Crushing the appliance with heavy equipment (loader, D9 Cat, etc.) Destruction of appliance must be confirmed (by photograph showing identifying marks and/or showing how the unit was rendered inoperative. Forward a copy of the Photograph to Dealer who in turn must submit it along with a copy of the tracking form to the distributor/manufacturer in order to process the retailers' discount. From there the forms must go to the HPBAC-western chapter office to be distributed as necessary. 1573 Charleton Court, Port Coquitlam, BC V3B 6M8. 604-941-4172 phone/fax, [zigi@shaw.ca](mailto:zigi@shaw.ca)

**NOTE: Steel is going at \$100.00 per ton right now and if you leave the bricks in the appliance, then the recycler does not get an accurate weight for the appliances and gets a lesser fee for the steel. They prefer to get the appliances without the brick in them.**

**Destruction of appliance must be confirmed  
(by photograph showing identifying marks and/or showing how the unit was rendered inoperative)**

## **Aids to “OLD BELCHER” removal from Air Sheds**

By-laws and other little things may be a necessary evil to the removal of the old non clean burning appliances that have been with us for a great many years. Especially those years when we didn't quite understand the difference between health and efficiency and burn time. Now we know and it's time to do something about those appliances that are the root of our problem.

1. for health and environmental concerns, a bylaw should be implemented where by a certain date, only clean burning appliances can be used such as EPA and in the near future this will include CSA B415 approved appliances.
2. If the house is sold, a bylaw should be in place that the appliance should meet EPA
3. nuisance bylaw. Even if someone has an EPA stove, they must burn it cleanly
4. insurance industry to set time limit on grandfathering non-certified stoves
5. waiving permit fees for installations for program participants